



CANADA NICKEL
COMPANY

Introduction to Canada Nickel Company

Delivering the Next Generation of Nickel

TSX-V: CNC
May 31, 2021

www.canadanickel.com



Forward Looking Statements



CANADA NICKEL
COMPANY

This Presentation contains certain information that may constitute "forward-looking information" under applicable Canadian securities legislation about Canada Nickel Company Inc. ("CNC"). Forward looking information includes, but is not limited to, the results of the Crawford preliminary economic assessment ("PEA") including statements relating to net present value, future production, estimates of cash cost, proposed mining plans and methods, mine life estimates, cash flow forecasts, metal recoveries, estimates of capital and operating costs, timing for permitting and environmental assessments, realization of mineral resource estimates, capital and operating cost estimates, project and life of mine estimates, ability to obtain permitting by the time targeted, size and ranking of project upon achieving production, economic return estimates, the timing and amount of estimated future production and capital, operating and exploration expenditures and potential upside and alternatives. Readers should not place undue reliance on forward-looking statements.

Forward-looking statements involve known and unknown risks, uncertainties and other factors which may cause the actual results, performance or achievements of CNC to be materially different from any future results, performance or achievements expressed or implied by the forward-looking statements. The PEA results are estimates only and are based on a number of assumptions, any of which, if incorrect, could materially change the projected outcome. There are no assurances that Crawford will be placed into production. Factors that could affect the outcome include, among others: the actual results of development activities; project delays; inability to raise the funds necessary to complete development; general business, economic, competitive, political and social uncertainties; future prices of metals or project costs could differ substantially and make any commercialization uneconomic; availability of alternative nickel sources or substitutes; actual nickel recovery; conclusions of economic evaluations; changes in project parameters as plans continue to be refined; accidents, labour disputes, the availability and productivity of skilled labour and other risks of the mining industry; political instability, terrorism, insurrection or war; delays in obtaining governmental approvals, necessary permitting or in the completion of development or construction activities; mineral resource estimates relating to Crawford could prove to be inaccurate for any reason whatsoever; additional but currently unforeseen work may be required to advance to the feasibility stage; and even if Crawford goes into production, there is no assurance that operations will be profitable.

This Presentation has been completed by CNC. Certain corporate projects referred to herein are subject to agreements with third parties who have not prepared, reviewed or approved this Presentation. The Presentation is not intended to reflect the actual plans or exploration and development programs contemplated for such projects. Any forward-looking statement speaks only as of the date on which it is made and, except as may be required by applicable securities laws, CNC disclaims any intent or obligation to update any forward-looking statement, whether as a result of new information, future events or results or otherwise. Although CNC believes that the assumptions inherent in the forward-looking statements are reasonable, forward-looking statements are not guarantees of future performance and accordingly undue reliance should not be put on such statements due to the inherent uncertainty therein.

The scientific and technical information contained in this Presentation has been reviewed by Steve Balch, P. Geo, (VP Exploration) and a Qualified Person within the meaning of National Instrument 43-101. The PEA, prepared by Ausenco Engineering Canada Inc. in accordance with National Instrument 43-101. The PEA is preliminary in nature, it includes inferred mineral resources that are considered too speculative geologically to have the economic considerations applied to them that would enable them to be categorized as mineral reserves, and there is no certainty that the results of the PEA will be realized. See Appendix for the Crawford PEA assumptions and the press release of CNC dated May 25, 2021.

Foreign Exchange Assumptions

All amounts discussed herein are denominated in CAD dollars unless otherwise specified.

www.canadanickel.com

Why Invest in Canada Nickel?



CANADA NICKEL
COMPANY

Canada Nickel (CNC) owns 100% of the Crawford Nickel-Cobalt Sulphide project:

A new nickel discovery with large scale potential in an established mining camp adjacent to existing infrastructure north of Timmins, Ontario, Canada

- One of the top 10 nickel sulphide resources globally, with significant expansion potential
- Nickel mineralization in Crawford extended to Main, East, West and North Zones, with total strike length of ~7 km. Successfully intersected nickel mineralization at MacDiarmid option property 15% larger than original Crawford Main Zone
- Groundbreaking, mutually beneficial MOUs signed with local First Nations
- Canada Nickel has launched wholly-owned NetZero Metals Inc. to develop zero-carbon production of Nickel, Cobalt and Iron - has applied for trademarks NetZero Nickel™, NetZero Cobalt™, NetZero Iron™

Canada Nickel has completed PEA on May 25th, feasibility study by mid 2022

- PEA confirms robust economics - US\$1.2 billion after-tax NPV_{8%} and 16% after-tax IRR with first quartile net C1 cash cost of US\$1.09/lb and net AISC of US\$1.94/lb of nickel
- PEA on late 2020 resource – substantial upside resource potential and other initiatives to be included in FS

Canada Nickel is well timed – nickel appears to be entering a supercycle which occur every 15-20 years

- Prices should remain at relatively high levels for an extended period to incent new supply to meet already strong demand growth further accelerated by substantial requirements from electric vehicles

Nickel has limited investible opportunities

- Prior supercycle in 2005-2007 largely emptied project pipeline outside Indonesia

Board and Management Team



CANADA NICKEL
COMPANY

David Smith Director P.Eng., C.Dir.	<ul style="list-style-type: none"> • Senior VP, Finance and CFO of Agnico Eagle Mines Limited; • Chartered Director, Director of Sprott Resource Holdings 	Mark Selby Chairman, CEO B.Comm.	<ul style="list-style-type: none"> • Previous CEO of Royal Nickel Corporation • Corporate development, strategy, business planning and market research Executive with Quadra Mining and Inco • Nickel market expert
Francisca Quinn Director M.Sc.	<ul style="list-style-type: none"> • Co-founder and President of Quinn & Partners Inc., a recognized advisory firm advancing sustainability in business and capital markets; • Previously with Carbon Trust and WSP Global 	Wendy Kaufman CFO CPA, CA	<ul style="list-style-type: none"> • >25 years of experience leading mining companies in project finance, capital structure, capital markets, accounting and internal controls, tax, financial reporting and public disclosure; completed \$4 billion finance for Cobre Panama
Jennifer Morais Director BA, MBA, CFA	<ul style="list-style-type: none"> • >20 years as senior executive in private equity, alternative finance, mining finance and management consulting; previously with TPG Capital, CPPIB, OMERS, Hatch and CIBC 	Steve Balch VP, Exploration P.Geo.	<ul style="list-style-type: none"> • Geophysicist with 35 years experience specializing in Ni-Cu-PGE deposits including for Inco Limited in the Sudbury Basin and Voiseys Bay • Active in developing geophysics technology used in exploration globally
Kulvir Singh Gill Director B.Comm., ICD.D	<ul style="list-style-type: none"> • 20 years of experience in innovation and sustainability in mining; lead innovation and growth projects for Fortune 500 clients across the mining, O & G and heavy industrial sectors 	John Leddy Senior Advisor, Legal LL.B.	<ul style="list-style-type: none"> • Senior Advisor, Legal and Strategic Matters at Karora Resources Inc. (formerly RNC Minerals); • Over 20 years' experience as a business lawyer and former Partner at Osler
Mike Cox Director B.Sc., MBA	<ul style="list-style-type: none"> • Managing Partner at CoDa Associates; previously head of Vale UK and Asian refineries following over 30 years in senior leadership roles in Base Metals with Inco and Vale 	Pierre-Philippe Dupont VP, Sustainability M.Sc.	<ul style="list-style-type: none"> • >15 years of experience in successfully obtaining environmental, community stakeholder and First Nation approvals for mining projects, including permitting Dumont Nickel and Canadian Malartic; former Director of Sustainability at Glencore
Russell Starr Director MA, MBA	<ul style="list-style-type: none"> • Previously in senior roles with RBC Capital Markets, Scotia Capital, Orion Securities, and Blackmont; SVP and Director of Cayden Resources (acquired by Agnico for \$205M) 	Christian Brousseau Project Director P.Eng., MBA, ing.	<ul style="list-style-type: none"> • 30 years of experience with engineering, design and construction in mining, including >6 years as project Director for the Dumont Nickel Project, three years as the Engineering and Construction Manager for Detour Gold

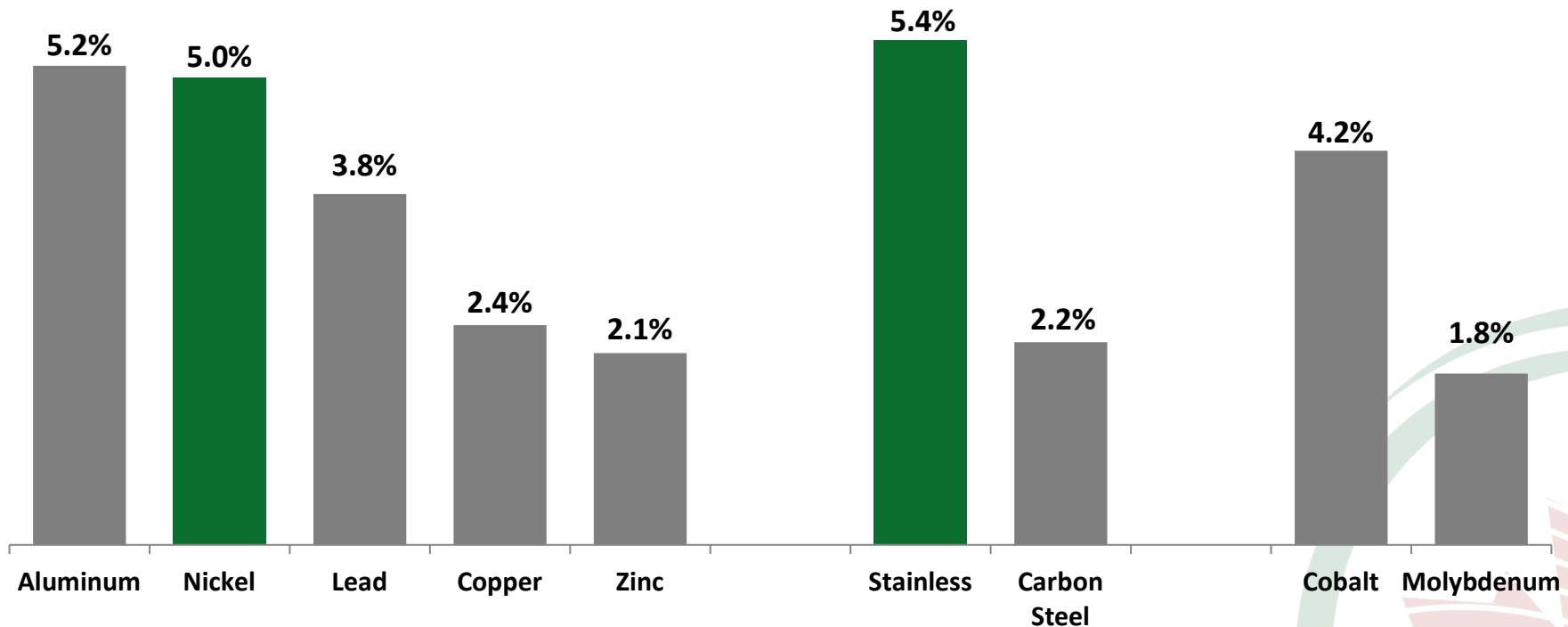
Nickel Demand: A Leader Among Metals



CANADA NICKEL
COMPANY

Nickel demand a leader among metals over the last decade (5%) driven by continued strong growth in stainless steel (5.4%) with little contribution from electric vehicles to date

Base Metals & Other Metals Demand CAGR% (2007 - 2017)



Electric Vehicles to Drive Significant Demand Growth – 9.2 Mtpa by 2050

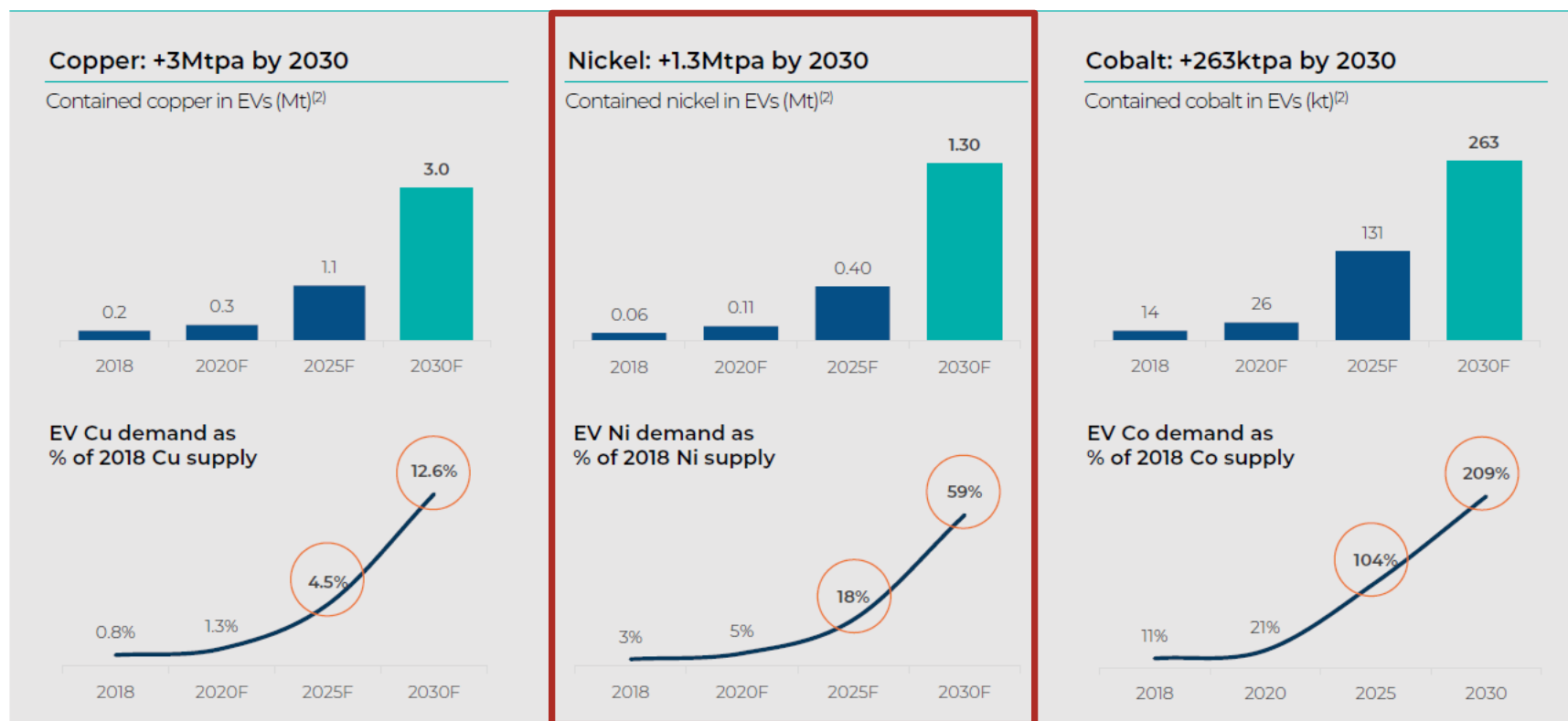


CANADA NICKEL
COMPANY

Glencore presentations highlight massive growth expected in nickel demand.
Tesla 3TW of annual batteries needs 1+ Mtpa alone!

Electrification of transport relies on the large scale replacement of ICE with EVs

The mobility transition is a major new source of material demand: >140M EVs forecast on the road by 2030⁽¹⁾



Bank of America Merrill Lynch
2019 Global Metals, Mining & Steel Conference

Source: (1) BNEF Long-Term Electric Vehicle Outlook 2018. (2) Glencore estimates, Wood Mackenzie, CRU, BNEF. Does not include the copper, nickel or cobalt required for other parts of the EV supply chain including charging infrastructure, energy storage systems, grid

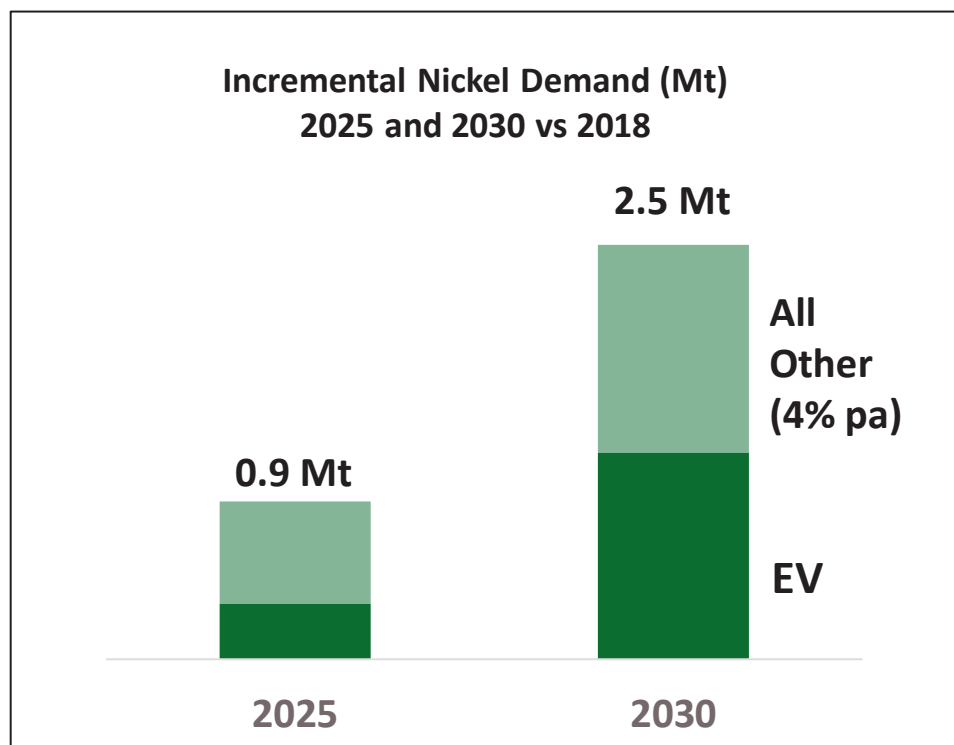
GLENCORE

Nickel Demand: EVs Going to Multiply Demand Requirements



CANADA NICKEL
COMPANY

By 2025, EV + trend demand 4% growth (slower than 5% trend) requires nearly 1 Mtpa of new supply. By 2030, *2.5 million tonnes (or double today's)* is required. *Outside of Indonesia, very little visibility on new supply.*



Where is new project supply going to come from?

Laterites – HPAL?

Laterites – FeNi?

NPI?

Sulphides?

*Using copper as comparison,
adding 100% of current nickel supply is equivalent to adding 20 Escondidas*

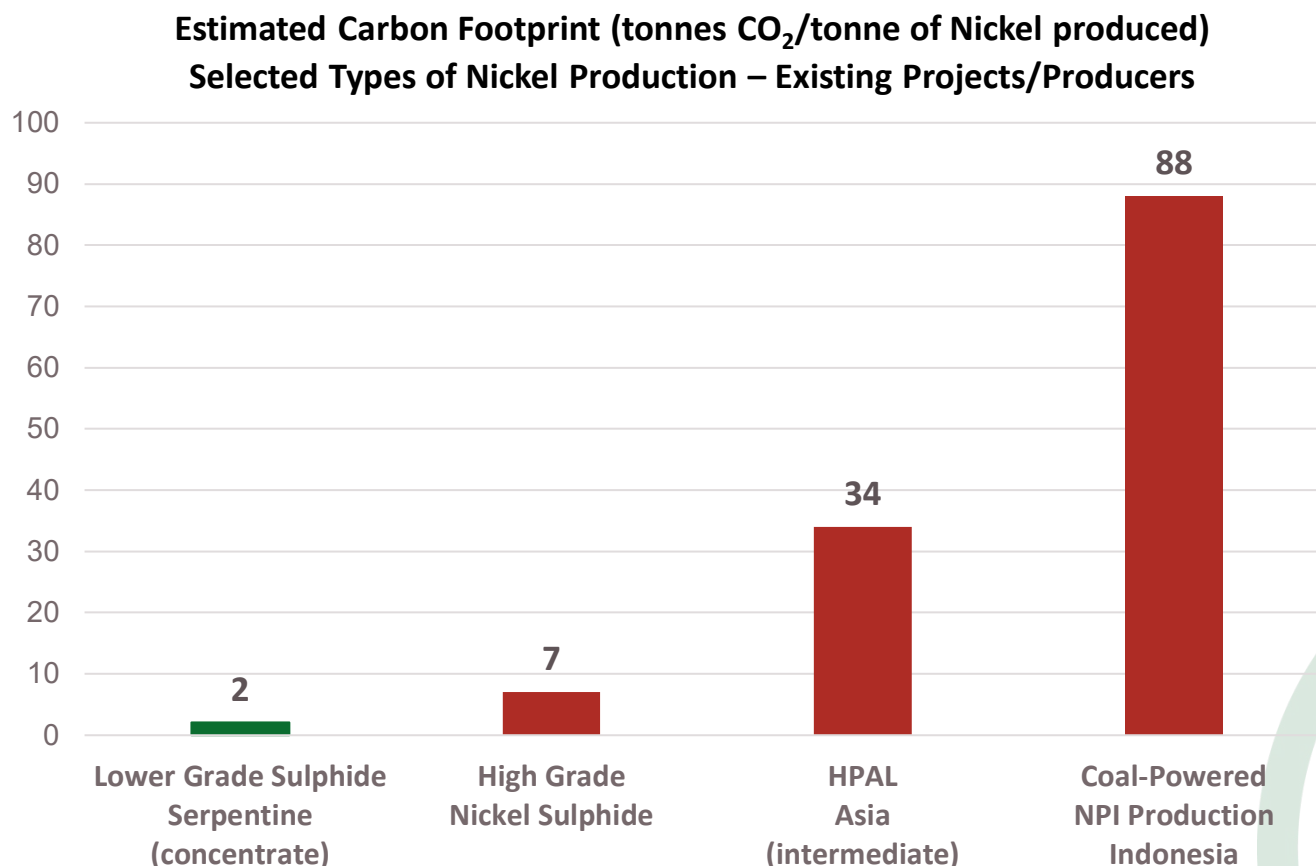
Source: CRU, CNC Analysis

Tesla: “Please mine more nickel...”



CANADA NICKEL
COMPANY

“...please mine more nickel... Tesla will give you a giant contract for a long period of time if you mine nickel efficiently and in an environmentally sensitive way.” – Elon Musk, Co-Founder and CEO, Tesla Earnings Call July 22, 2020



Nickel Supply – Significant Political Risk

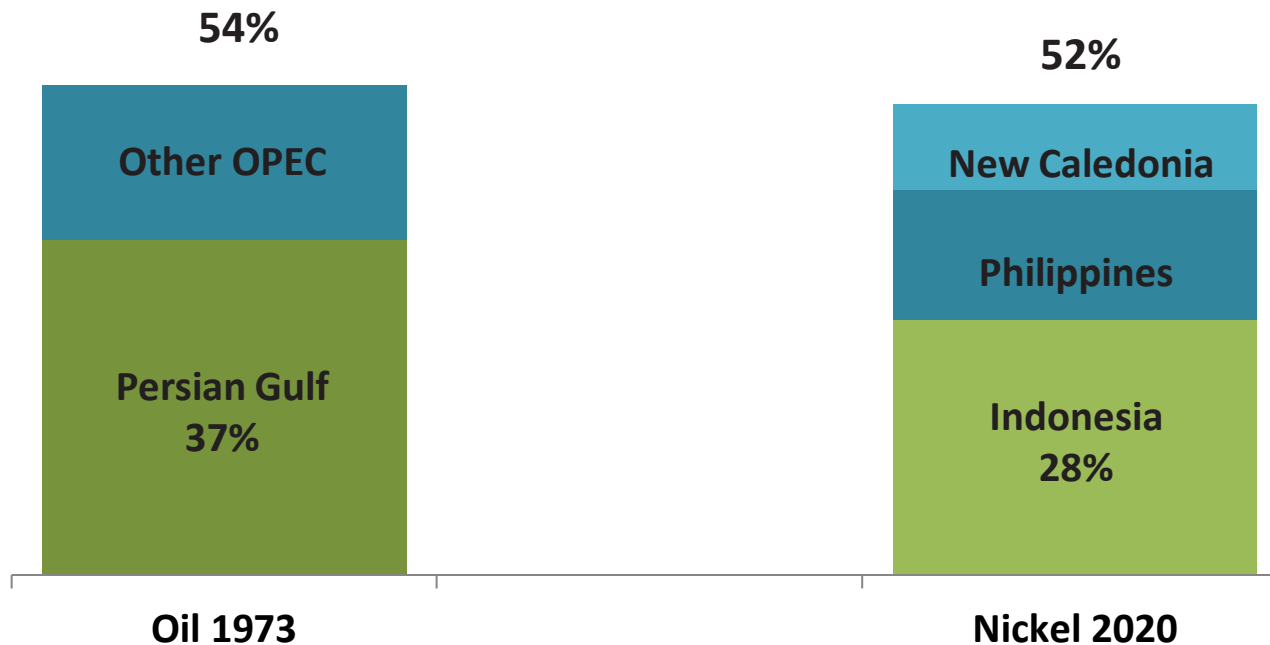
Is there an OPEC in our future ??



CANADA NICKEL
COMPANY

Nickel supply facing increasing political risk as Indonesia now dominates nickel supply growth. Just 3 countries are expected to control as much of the nickel supply as OPEC did of global oil supply at its peak in 1973

**Nickel Supply Concentration (2020)
vs Oil Supply Concentration at OPEC peak (1973)**



These 3 countries:

- Face revenue shortfalls
- Have intervened directly into mining sector

Source: U.S. EIA, Canada Nickel analysis

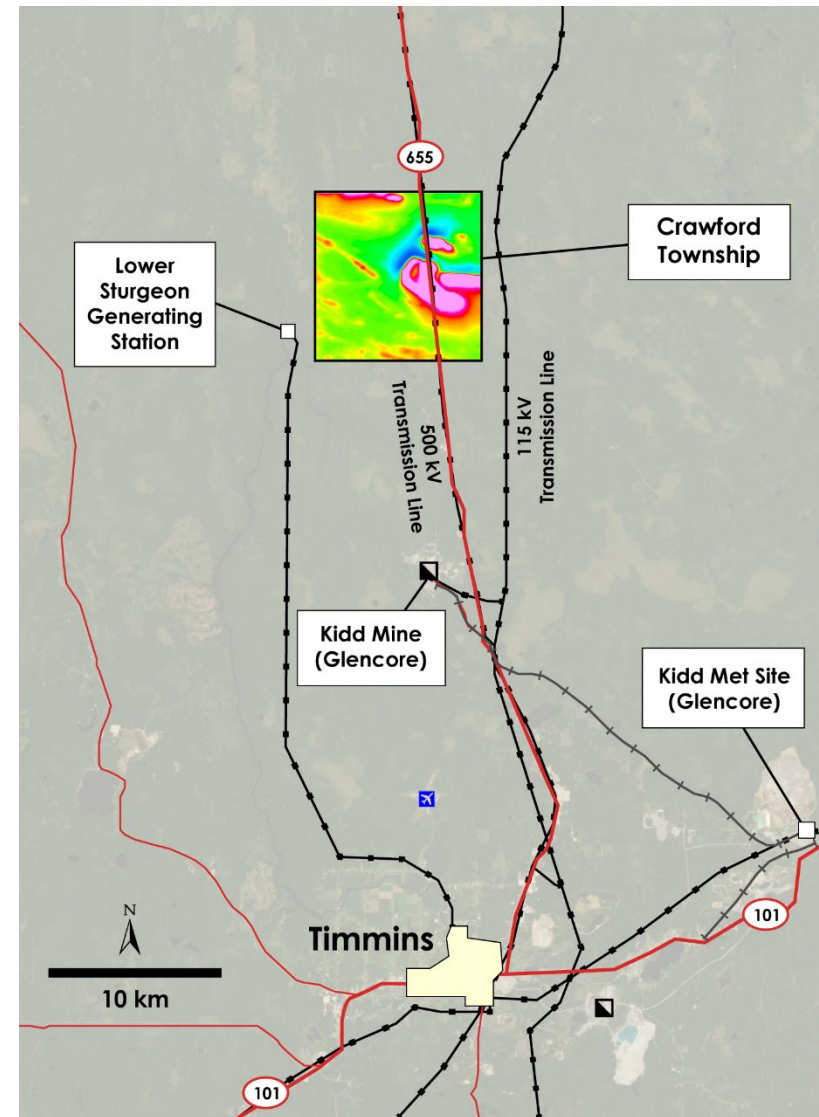
Crawford Nickel Sulphide Project



CANADA NICKEL
COMPANY

One of largest nickel sulphide resources located in a well established mining camp with infrastructure

- World-class jurisdiction in Ontario, Canada
- Established Timmins mining camp with 100-year history of mining
- Access to all major infrastructure including zero-carbon hydroelectricity
- Active permitting and development of mines
- Long history of downstream processing





The Crawford PEA demonstrates strong financial returns based on a large resource with significant upside potential

Robust Economics

- ✓ US\$1.2 billion after-tax NPV_{8%}
- ✓ 16% after-tax IRR

Large Scale, Long Life

- ✓ 42ktpa nickel at peak production (Phase III), 34ktpa nickel LOM
- ✓ 1.9 Billion pounds (842kt) of nickel, 21 Mt of iron, 1.5 Mt of chrome
- ✓ 25-year mine life

Low Cost

- ✓ Life-of-mine average net C1 cash cost of US\$1.09/lb
- ✓ Life-of-mine net AISC of US\$1.94/lb

Highly Profitable

- ✓ Annual EBITDA of US\$439 million
- ✓ Annual Free Cash Flow of US\$274 million



Crawford is a structurally low cost operation

- Large scale mine / mill operation expanded in 2 stages from 42.5 ktpd to 120 ktpd
- Low strip ratio – life of mine 2.1:1 and initial phase 1.3:1
- Use of trolley trucks and electric shovels reduce diesel consumption by 40% taking advantage of zero-carbon electricity
- Conventional flowsheet (SAG, ball mill, flotation, magnetic separation)
- Produces 3 products
- High grade nickel concentrate (35% nickel) believed to be highest grade concentrate in world
- Standard grade concentrate (12% nickel) in line with typical nickel sulphide concentrates
- Magnetite concentrate containing 45-50% iron and an average of 3% chrome
- Non-acid generating waste rock and tailings with carbon sequestration capacity
- Major support infrastructure in place
- Local workforce – no fly-in/fly-out labour

Crawford

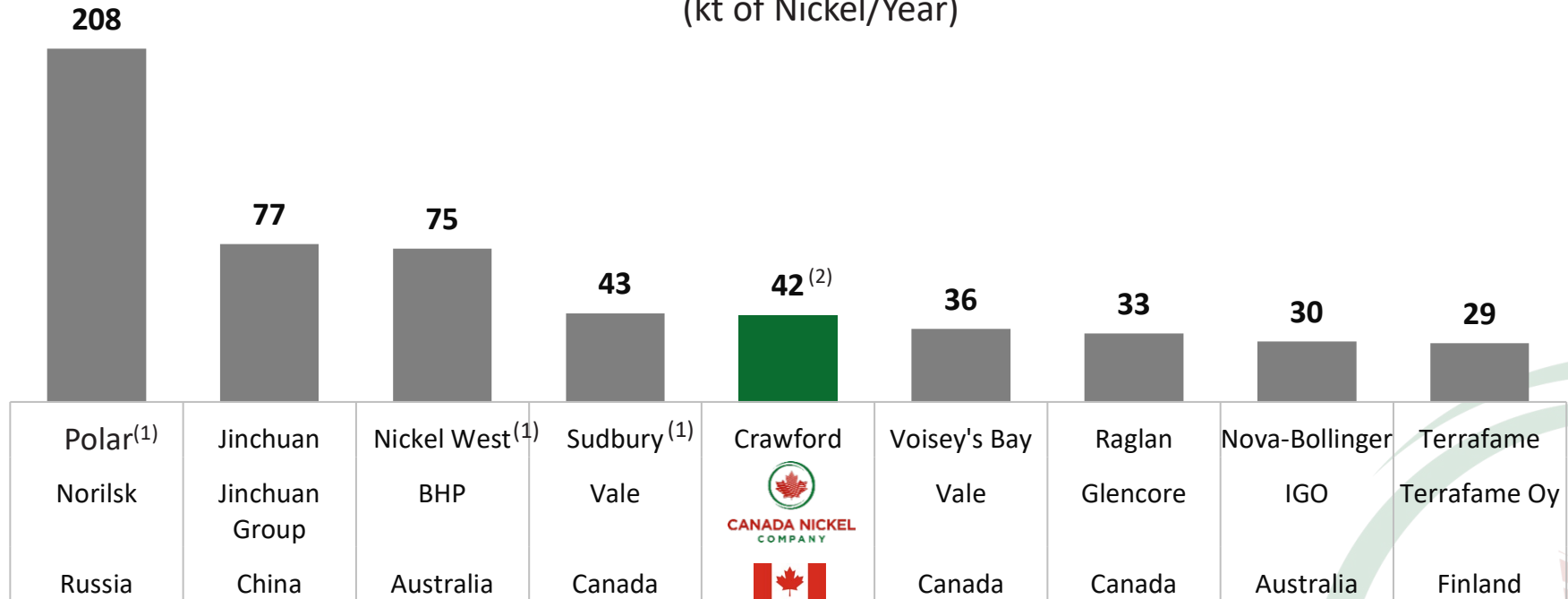
A Top 5 Nickel Sulphide Operation Globally



CANADA NICKEL
COMPANY

Based on PEA results, Crawford is expected to be among the top 5 nickel sulphide operations globally and would be largest single nickel sulphide mine outside Russia

Largest Nickel Sulfide Operations by 2020 Annual Production
(kt of Nickel/Year)



Source: S&P Market Intelligence

(1) Multiple mines

(2) Crawford production based on Phase III average annual production (Years 8 - 18) at 120ktpd throughput

Crawford

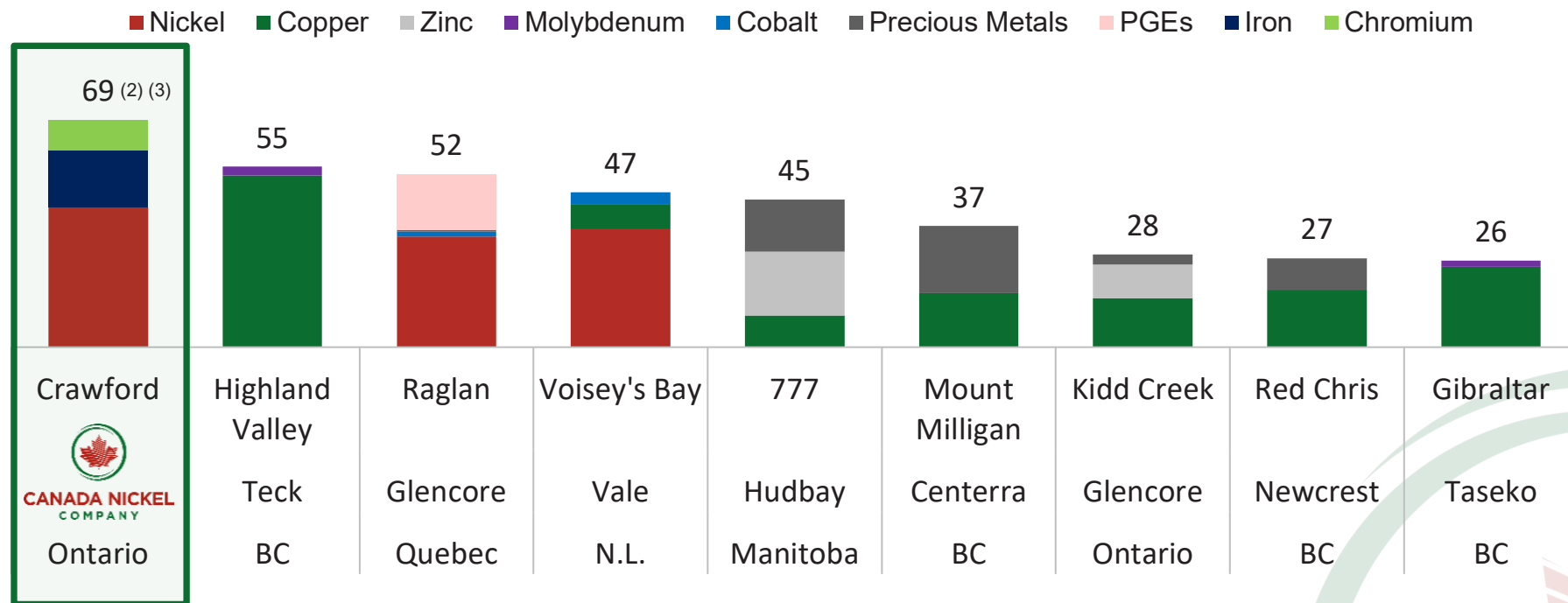
The Largest Base Metals Mine in Canada



CANADA NICKEL
COMPANY

Based on PEA results, Crawford is expected to be one of the largest base metal mines in Canada

Largest Canadian Base Metals Mines by 2020 Annual NiEq Production⁽¹⁾
(kt of Nickel Equivalent/Year)



Source: S&P Market Intelligence

(1) NiEq production for comparables calculated using 2020 average realized metal prices of: US\$6.43/lb Ni, US\$2.80/lb Cu, US\$11.79/lb Mo, US\$0.85/lb Pb, US\$1.05 Zn, US\$14.34/lb Co, US\$1,779/oz Au, US\$20.70 Ag, US\$892/oz Pt and US\$2,177/oz Pd

(2) NiEq production for Crawford calculated using Iron Ore price of US\$290/tonne and Chromium price of US\$1.04/lb

(3) Crawford production based on Phase III average annual production (Years 8 - 18) at 120ktpd throughput

Crawford

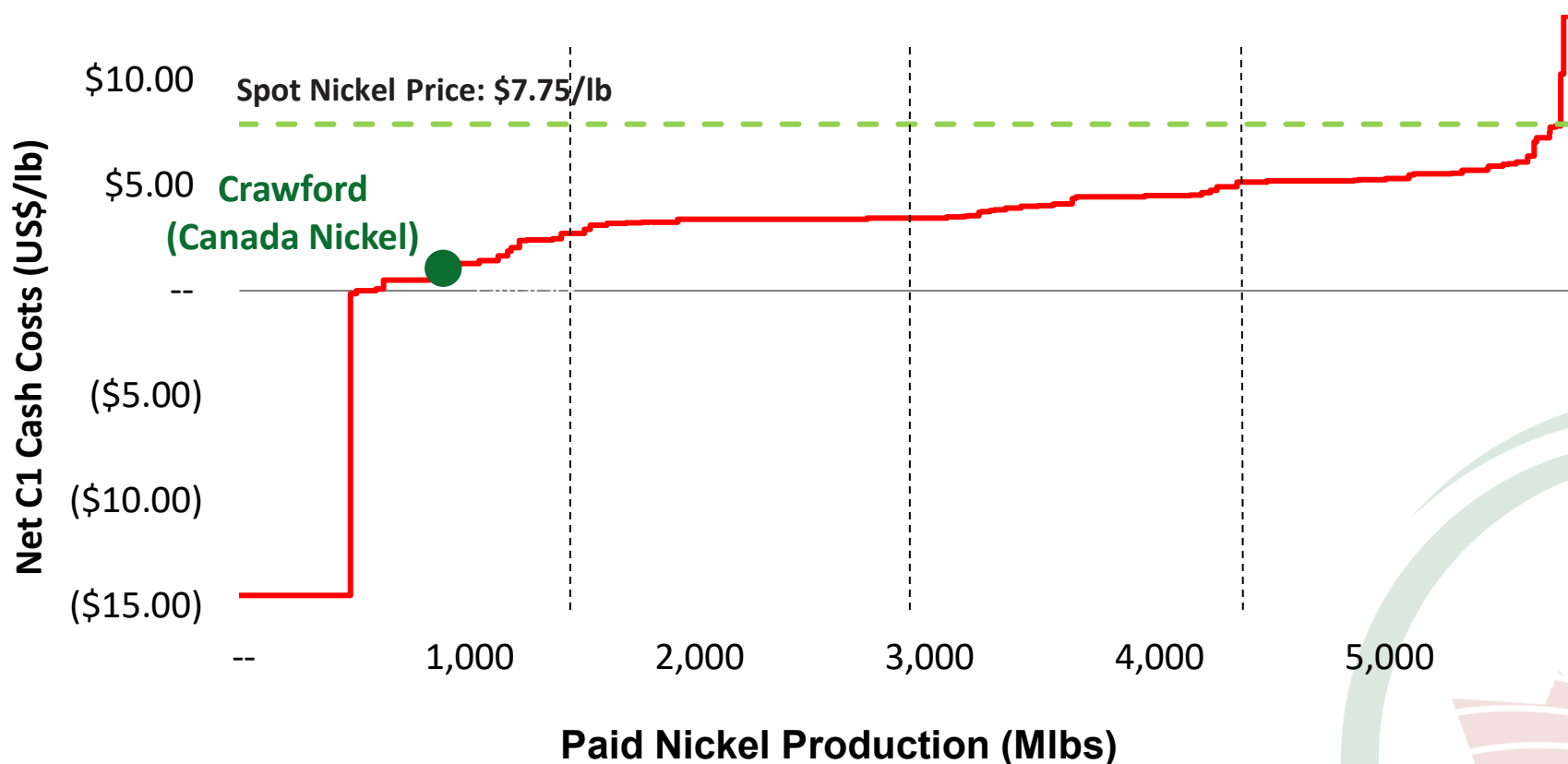
A 1st Quartile Net Cash Cost Producer



CANADA NICKEL
COMPANY

Based on PEA results, Crawford is expected to be a low cost producer with 1st quartile Net C1 Cash Cost and All-in Sustaining Costs

Crawford's Net C1 Cash Cost vs 2020 Net C1 Cash Cost of Global Nickel Operations



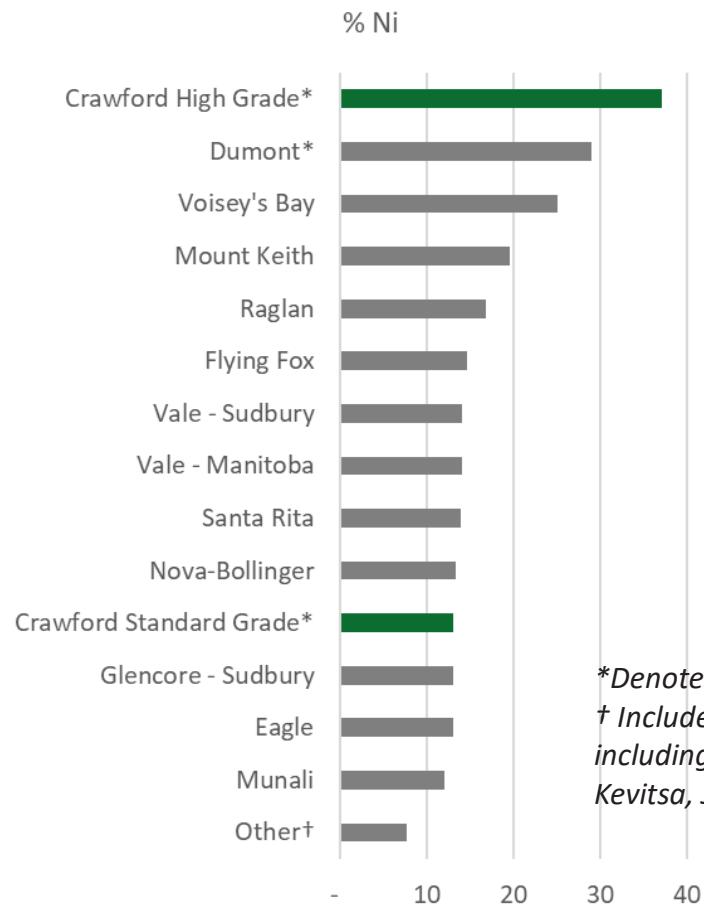
Crawford Producing Two Nickel Concentrates + Iron Concentrate



CANADA NICKEL
COMPANY

Crawford will produce two nickel concentrates, including a high grade concentrate expected to be the highest grade nickel concentrate at 35% nickel, and an iron concentrate containing chrome

2020 Concentrate Grade (% Ni and % Co) for Global Nickel Sulphide Operations/Projects Compared to Crawford Nickel-Cobalt Project⁽¹⁾



Results also confirm ability to deliver a target 45-50% iron magnetite concentrate containing an average of 3% chromium with focus on maximizing recovery rather than grade as expected to be processed locally.

**Denotes development projects.
† Includes 10 other operations including Raglan South, Leinster, Kevitsa, Jinchuan, Norilsk*

(1) Source: Wood Mackenzie

Additional Opportunities



CANADA NICKEL
COMPANY

1 Exploration Upside

Significant additional exploration potential within the Crawford Project and at the Company's additional properties including Bradburn/Dargavel

2 Recovery Optimization

Optimization of nickel, iron, chrome recovery and concentrate grades through additional test work during Feasibility Study stage

3 NetZero Carbon Footprint

Determine the carbon capture potential from the carbon sequestration potential of the Company's tailings and waste rock to permit the Company to achieve net zero carbon footprint operation

4 Cobalt & PGM Content

Processing of nickel concentrates to capture cobalt, PGM content through various processing alternatives for the company's high grade and standard grade concentrates

5 Potential CapEx Reduction

Capital cost reductions via electricity distribution and fleet acquisition opportunities; signed MOUs with Taykwa Tagamou First Nation to participate in the financing of all or a portion of the project's electricity supply and heavy mining equipment fleet

6 Kidd Creek

Completion of negotiations to utilize Glencore's Kidd Creek mill based on the capital and operating costs successfully determined during the initial phase of work



Crawford's resource ranks as one of the 10 largest nickel sulphide resources globally and now includes chrome values

- Higher grade core of M&I Resource of 280 Mt at 0.31% Ni, 0.59% Cr and 6.31% Fe within an overall M&I resource of 653 Mt at 0.26% Ni, 0.60% Cr and 6.58% Fe
- Higher grade inferred resource of approximately 110 Mt at 0.29% Ni, 0.58% Cr and 6.66% Fe within an overall inferred resource of approximately 497 Mt at 0.24% nickel, 0.61% Cr and 6.63% Fe

	Tonnage	Grade							Contained Metal					
	Mt	% Ni	% Fe	%Cr	% Co	%S	g/t Pd	g/t Pt	kt Ni	Mt Fe	kt Cr	kt Co	koz Pd	koz Pt
Main Higher Grade Zone														
Measured	151.7	0.32%	6.25%	0.60%	0.013%	0.20%	0.029	0.012	482.2	9.5	910.2	19.9	140.6	56.7
Indicated	128.6	0.30%	6.37%	0.57%	0.013%	0.16%	0.027	0.013	391.8	8.2	738.1	16.5	111.1	51.7
M&I	280.2	0.31%	6.31%	0.59%	0.013%	0.18%	0.028	0.012	873.9	17.7	1,648.3	36.4	251.7	108.4
Inferred	109.9	0.29%	6.66%	0.58%	0.013%	0.09%	0.026	0.013	315.0	7.3	641.8	14.0	92.9	46.7
Main Lower Grade Zone														
Measured	62.5	0.22%	6.83%	0.61%	0.013%	0.05%	--	--	135.1	4.3	383.5	8.2	--	--
Indicated	263.2	0.21%	6.90%	0.60%	0.013%	0.04%	--	--	557.0	18.2	1,591.1	34.6	--	--
M&I	325.6	0.21%	6.89%	0.61%	0.013%	0.04%	--	--	692.1	22.4	1,974.6	42.9	--	--
Inferred	210.2	0.21%	6.87%		0.013%	0.06%	--	--	444.9	14.4	1,289.2	27.1	--	--
East Zone														
Measured	25.8	0.26%	6.03%	0.63%	0.012%	0.04%	--	--	67.4	1.6	161.8	3.2	--	--
Indicated	21.8	0.26%	6.20%	0.65%	0.013%	0.04%	--	--	56.2	1.4	141.6	2.7	--	--
M&I	47.6	0.26%	6.11%	0.64%	0.013%	0.04%	--	--	123.6	2.9	303.4	6.0	--	--
Inferred	177.1	0.24%	6.63%	0.63%	0.013%	0.04%	--	--	424.1	11.7	1,113.3	22.7	--	--
Total Crawford Resources														
M&I	653.5	0.26%	6.58%	0.60%	0.013%	0.10%	0.028	0.012	1,689.8	43.0	3,926.3	85.2	251.7	108.4
Inferred	497.2	0.24%	6.74%	0.61%	0.013%	0.06%	0.026	0.013	1,184.0	33.5	3,044.3	63.9	92.9	46.7

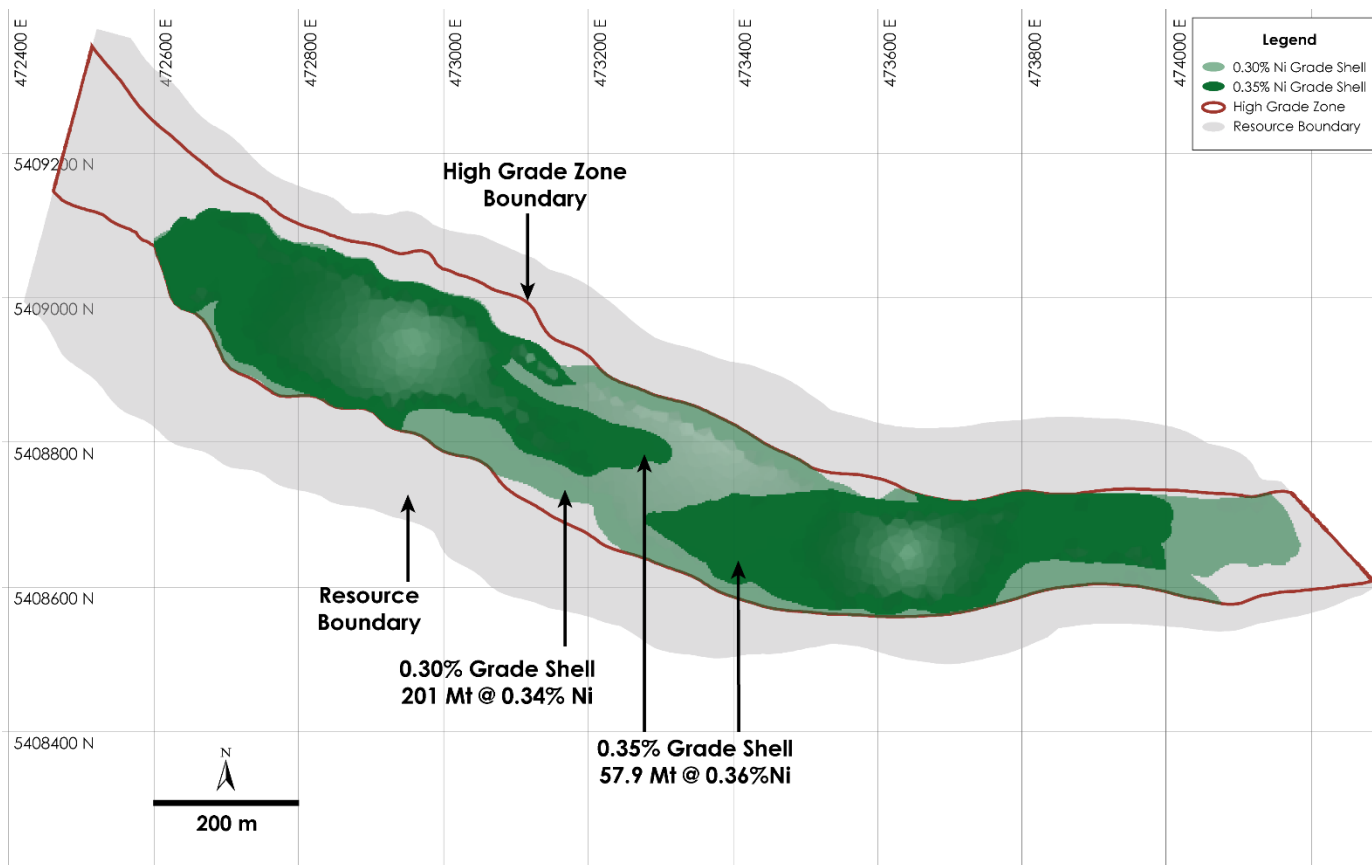
- Mineral Resource Estimate prepared by Caracle Creek International Consulting Inc., in accordance with the National Instrument 43-101 ("NI 43-101") and CIM Definition Standards on Mineral Resources and Reserves, with an effective date of May 21, 2021. Technical report to be released by July 9, 2021.
- Mineral resources that are not mineral reserves do not have demonstrated economic viability.

Higher Grade Core – Crawford Main Zone Clearly Defined in Resource



CANADA NICKEL
COMPANY

A higher grade core of 201 Mt of 0.34% Ni including 58 Mt at 0.36% was defined within resource. Remains open to the west.



The higher grade core has been defined for:

- 1.8 km long
- 150-220 m wide
- Up to 650 m deep
- Infill hole CR20-42 averaged 0.42% Ni

West Zone – Third New Discovery Hole 74 Extends Higher Grade Core



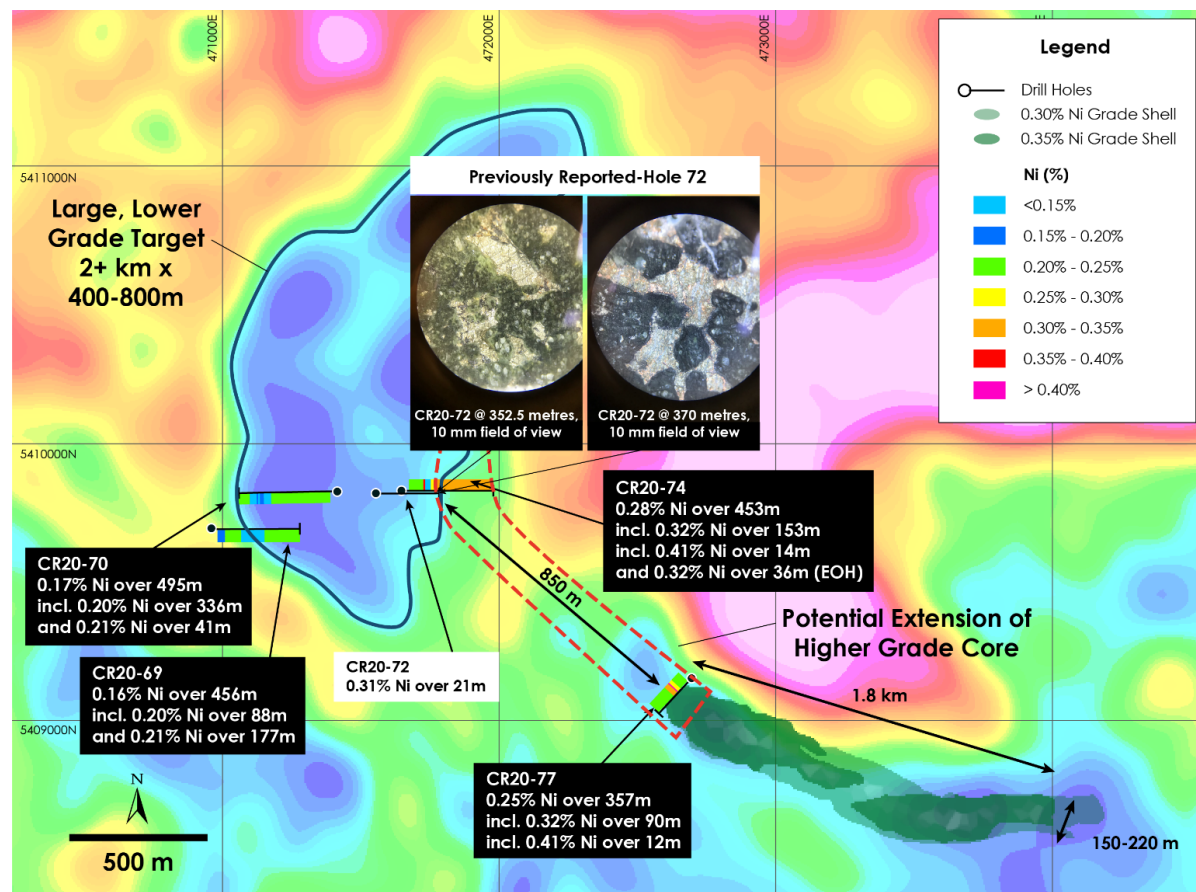
CANADA NICKEL
COMPANY

- Follow up drilling of hole CR20-74 in West Zone substantially extends higher grade mineralization potential by 45% or 850 metres to northwest.

– 0.30% nickel over core length of 308 metres, including 153 metres of 0.32% nickel and ending with an additional 36 metres at 0.32% nickel

- Two holes, CR20-69 and CR-70, defined wide, low grade mineralization across width of 1km within multi-kilometre anomaly and remains open in multiple directions

Main-Higher Grade Zone and West Zone Holes 69, 70, 72, 74 over top of gravity gradient

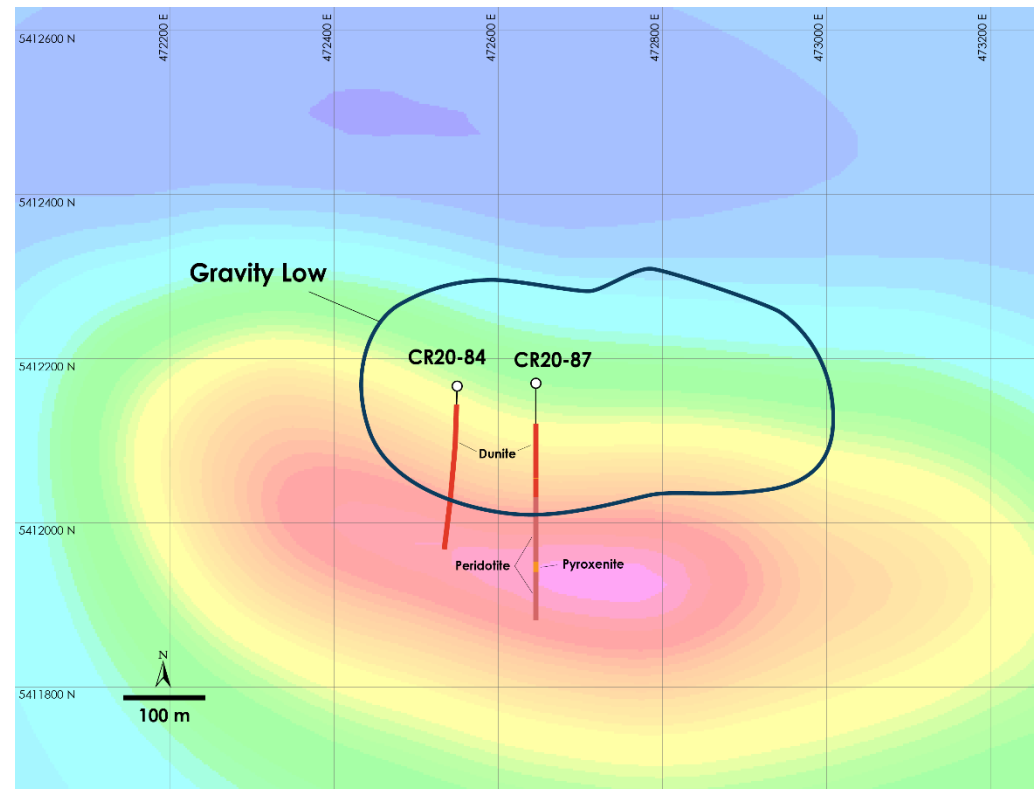
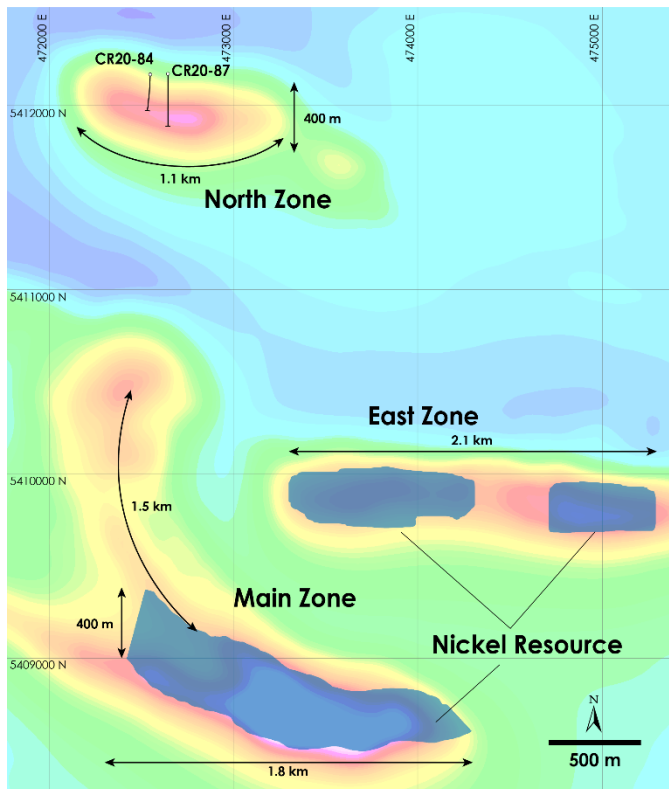


Fourth New Discovery Reinforces Geophysical Understanding



CANADA NICKEL
COMPANY

- Initial two drill holes collared 100 m apart intersected mineralized dunite in 1.1 km by 400 m wide geophysical anomaly approximately 2.5 km north of Main Zone.
- Hole CR20-84 remained in mineralized dunite across its entire core length of 501 metres.
- Hole CR20-87 collared in and intersected mineralized dunite for 218 m, before intersecting multiple peridotite/pyroxenite sequences similar to ones seen in recently discovered PGM zones at Crawford.



NetZero Metals

NetZero Carbon Production Potential



CANADA NICKEL
COMPANY

A number of key technologies are being explored to develop a Zero-Carbon footprint operation

Mining

- Utilization of electric rope shovels and trolley trucks which utilize electricity, rather than diesel fuel, as a power source wherever possible
- Deposition approaches for waste rock and tailings during mining to expose the serpentine rock to air to allow this material to absorb CO₂ through natural mineral carbonation (exact amount and rate at which CO₂ can be absorbed from materials mined at Crawford will be analyzed during upcoming phases of work)

Milling

- Large scale processing of lower grade sulphide ores utilizes a significant amount of electricity - local proximity to hydroelectricity provides the potential to minimize carbon emissions for this stage of production

NetZero Metals - Nickel-Cobalt Concentrate Processing

- Existing pyrometallurgical processes such as roasting, sulphation roasting, and reduction using electric arc furnaces (utilizing natural gas rather than coke or coal as a reductant) with the offgases captured and re-routed to allow the CO₂ be captured by the waste rock and tailings
- Existing hydrometallurgical processes to produce nickel and cobalt products such as the Albion or other similar processes, which generate minimal off-gases to produce nickel and cobalt products. The off-gases will again be captured and treated to ensure CO₂ and SO₂ emissions are minimized

NetZero Metals - Magnetite Concentrate Processing

- Production of iron products utilizing existing direct reduced iron (DRI) processes or reduction in electric arc furnaces utilizing natural gas

Ground-breaking MOU Signed with Local First Nations



CANADA NICKEL
COMPANY

Canada Nickel has entered into Memorandum of Understandings with Taykwa Tagamou Nation and the Matachewan and Mattagami First Nations.

TAYKWA TAGAMOU



“Our community favours a development project like Canada Nickel’s that provides a positive economic impact, minimal environmental impacts with a commitment to deliver NetZero products, and has the foresight to engage with Taykwa Tagamou during the early stages of development.” – *Chief Bruce Archibald, Taykwa Tagamou Nation, December 16, 2020*



“...happy to be forging a strong and mutually beneficial relationship with Canada Nickel on their promising Nickel-Cobalt Project.” – *Chief Jason Batisse, Matachewan First Nation, December 14, 2020*



“Mark is genuinely committed to responsible and sustainable development, and our community appreciates being engaged in the early planning stages of the project.” – *Chief Chad Boissoneau, Mattagami First Nation, December 14, 2020*

MOU Signed for Potential Use of Glencore Kidd Concentrator & Met Site



CANADA NICKEL
COMPANY

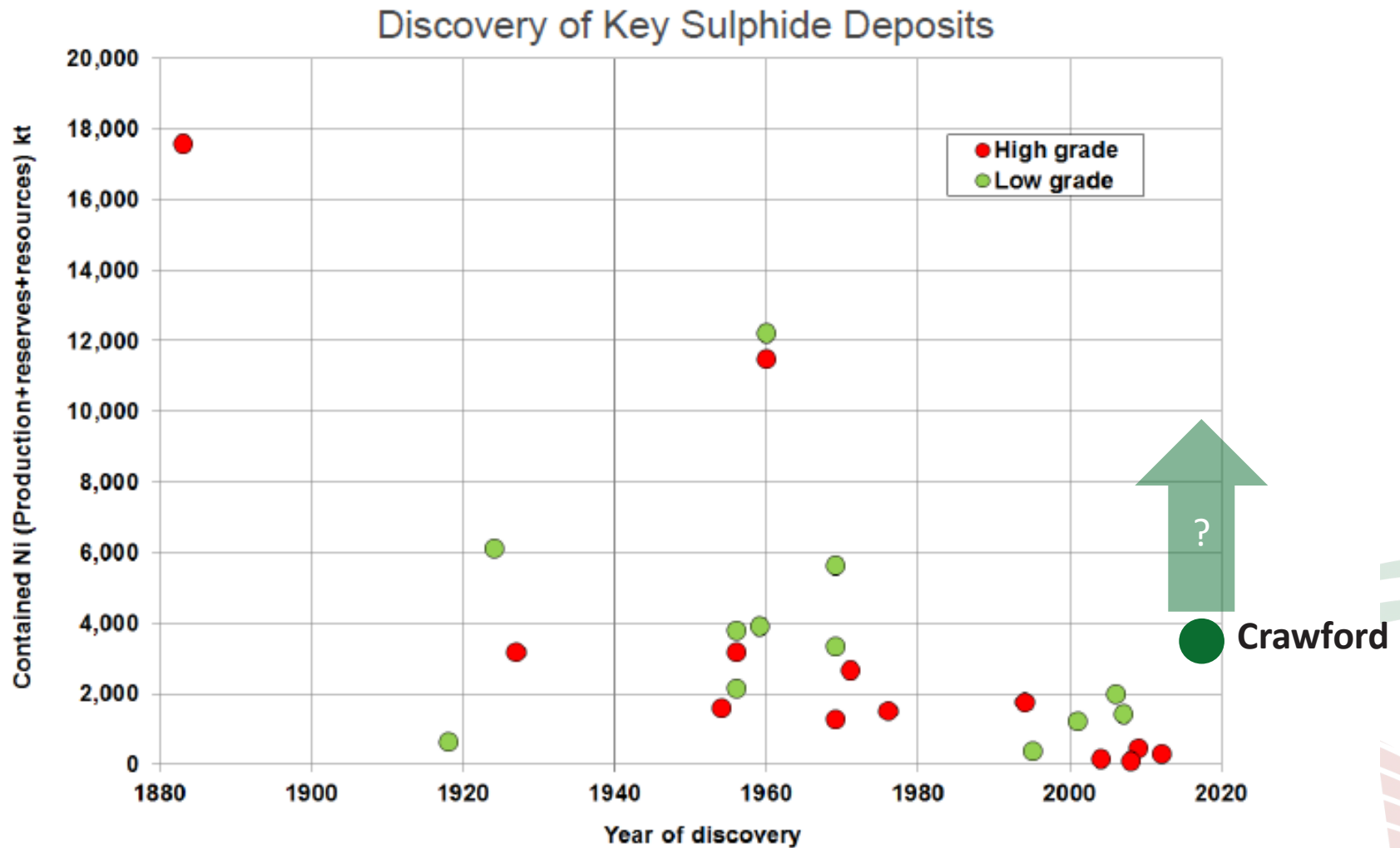
The opportunity to utilize the excess capacity and existing infrastructure at the Kidd Met Site provides the potential to allow a faster, simpler, smaller scale start-up of Crawford at a vastly lower capital cost while the Company continues to permit and develop the much larger scale project currently being contemplated

- MOU signed for potential use of Glencore's Kidd concentrator and metallurgical site ("Met Site") in Timmins, Ontario for the treatment and processing of material mined from Crawford approximately 40 km away
- Canada Nickel has completed an initial high-level assessment and will now proceed with a detailed study on the potential for upgrading excess capacity at the Kidd Concentrator and/or utilizing the existing infrastructure in place at the Kidd Met Site for milling and further processing the nickel-cobalt and magnetite concentrates that are expected to be produced from Crawford.
- Should the study deliver a positive outcome for both parties, the parties will continue good faith negotiations towards a binding agreement.
- This detailed study is expected to be completed by the end of March 2021.

Crawford is Largest Nickel Sulphide Discovery Since Early 1970s



CANADA NICKEL
COMPANY



Source: Vale presentation at the Metal Bulletin 3rd International Nickel Conference , London, April 29, 2015

Significant Exploration Potential

>50% Crawford + Multiple New Targets



CANADA NICKEL
COMPANY

Fully consolidated properties contain multiple nickel-bearing target structures 30km of total strike length and 150 - 600m wide

- For reference, the Crawford Main Zone resource is 1.7 km long and 225-425 metres wide

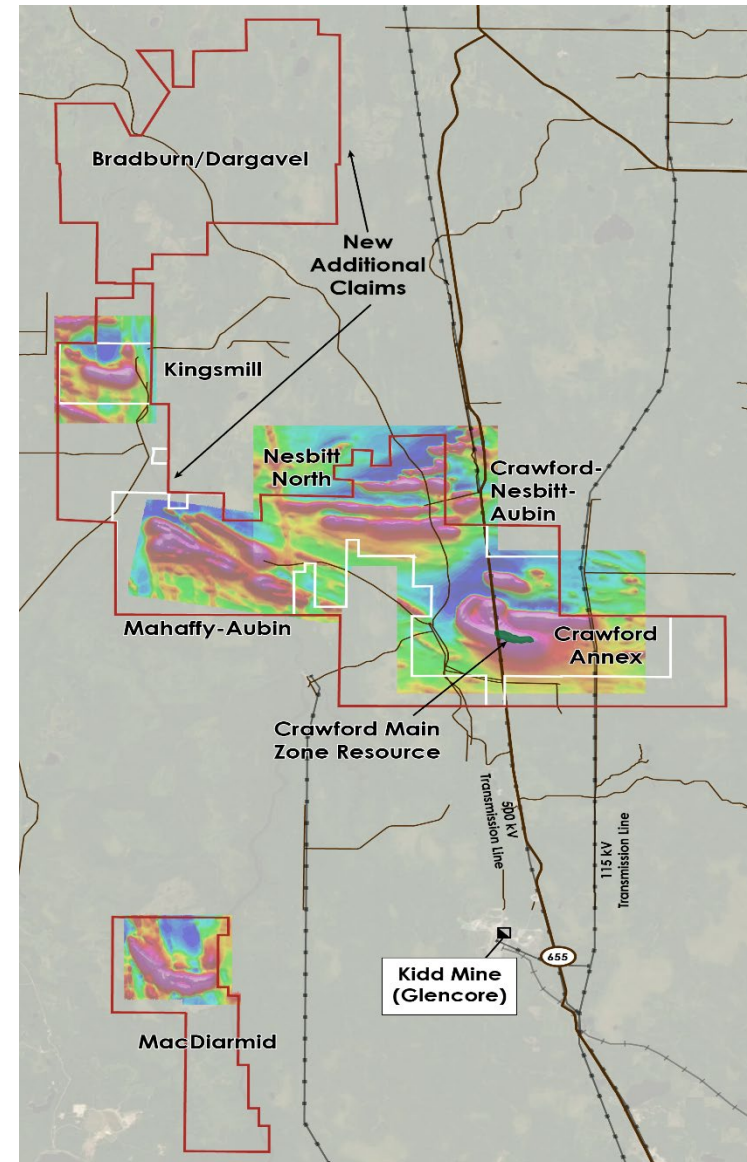
Historic drilling yielded nickel-bearing intersections on all of the target structures

- Kingsmill – 0.30% Ni over 503m from 118m in historic hole KML-12-02 (2012) and 0.31% Ni over 302m from 20m in historic hole 27090 (1966)
- Nesbitt-North – 0.28% Ni over 163m from 233m in historic hole 27083 (1966)
- Mahaffy-Aubin – 0.23% Ni over 127m from 82m in historic hole 31901 (1966) and of 276m of serpentinized ultramafic mineralization (similar host mineralization at Crawford) in historic hole T2-80-2 (1980) with no assays provided
- Dargavel - 0.24% nickel over 173m with local assays up to 0.40% nickel in historic hole 25014

PGM-enriched structures similar to Crawford also identified at Kingsmill

- 1.0 g/t PGM over 2m from 96m within 0.3 g/t PGM over 30m from 69m in historic hole KML-12-11 (2012), 0.8 g/t PGM over 5m from 523m within 0.5 g/t PGM over 24m in historic hole KML-12-07 (2012)

Airborne magnetic and gravity survey totaling 2,731 km completed.



MacDiarmid – 15% Larger Anomaly Than Crawford Main Zone

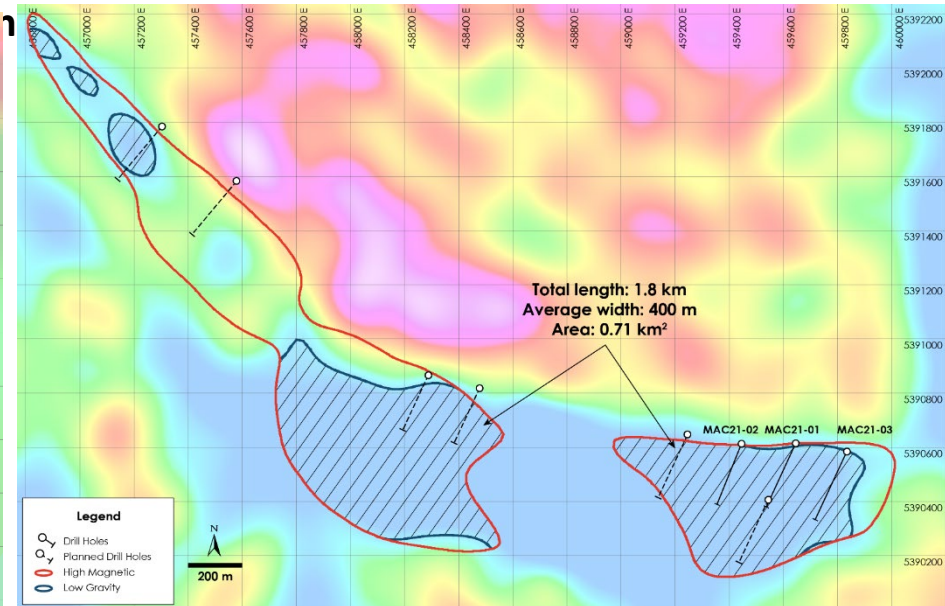
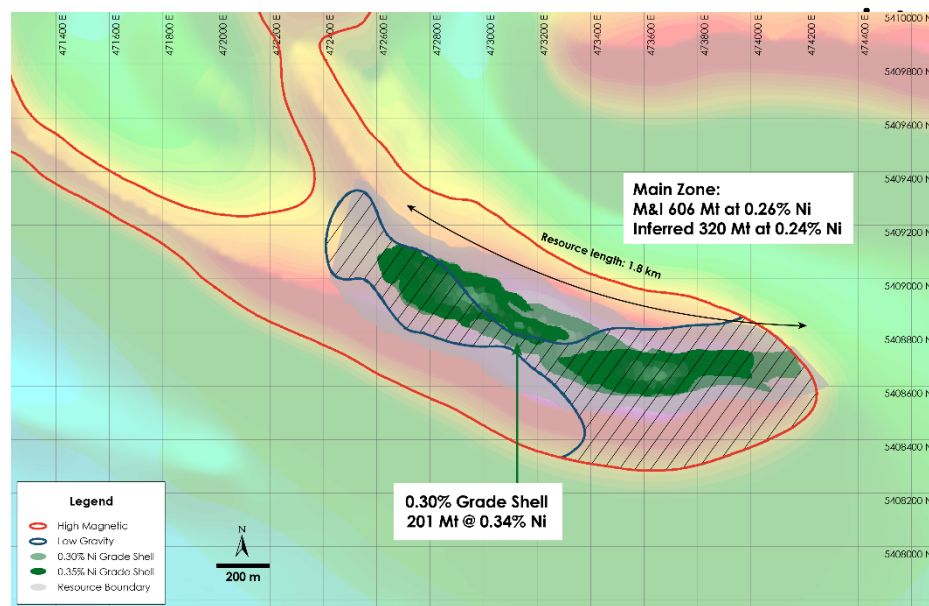


CANADA NICKEL
COMPANY

The first three holes drilled at MacDiarmid returned significant intersections of mineralized dunite similar to the average mineralization initially discovered at Crawford

Plan view of Crawford and MacDiarmid Properties

Outline of Gravity Low and Magnetic High geophysics anomaly overlain on total field magnetic



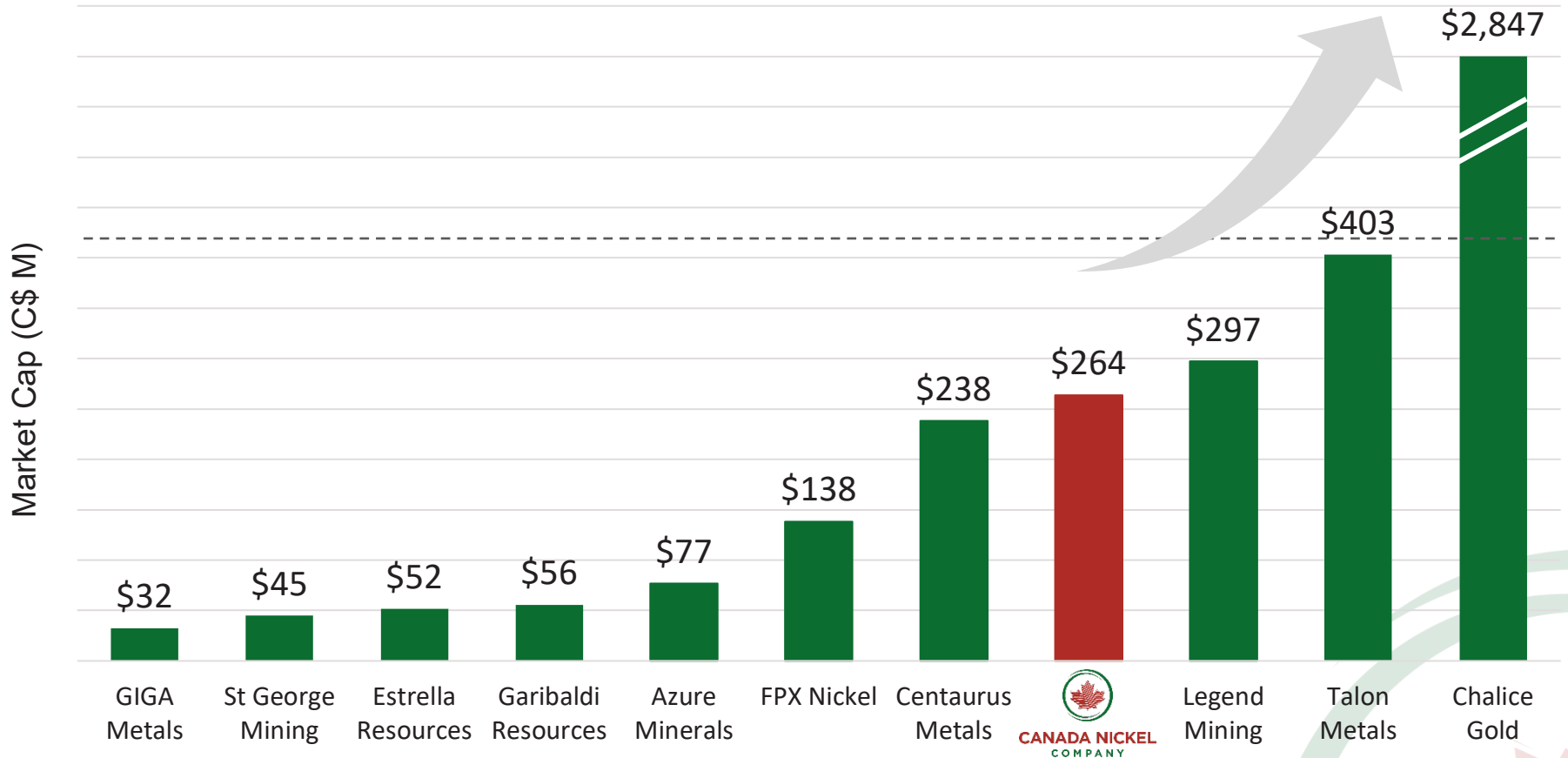
Coincident anomaly at MacDiarmid is 15% larger than Crawford.

Canada Nickel

Well-Positioned Versus its Peers



CANADA NICKEL
COMPANY



CANADA NICKEL
COMPANY

Ni Project	Turnagain	Hawaii	Carr Boyd	E&L	Andover	Decar	Jaguar	Crawford	Mawson	Tamarack	New Julimar
Ownership	100%	100%	100%	100%	60%	100%	100%	100%	70%	60%	100%
Discovery Year	2004	2012	2020	1966	1986	2010	2019	2019	2019	2007	2019

New Nickel Sulphide Discoveries Have Been Acquired at Significant Valuations



CANADA NICKEL
COMPANY

DIAMOND FIELDS
RESOURCES



SIRIUS
RESOURCES

Voisey's Bay

Cosmos

**Multiple
Mines**

**Nova
Bollinger**

**Acquisition
Value &
Year**

**C\$4.5 B
(1996)**

**A\$3.1 B
(2007)**

**C\$6.8 B
(2007)**

**A\$1.8B
(2015)**

**Share Price
Accumulation**

37x

58x

6.5x

15x

Reserve (Mt)

0.9

0.09

1.4

0.27

Resource (Mt)

2.1

0.5

4.4

0.3

Production (kt)

50

12

34

26

Ownership Structure



CANADA NICKEL
COMPANY

The Company's cash balance at January 31, 2021 was \$7.5 million and the company announced the acceleration of 2,675,000 warrants which were all exercised at \$2.10 per share

Pro Forma Capital Structure As at April 28, 2021	
Common Shares (M)	84.7
Shares to be issued for property acquisition from Noble (M)	3.5
Warrants (M)	0.3
Options / RSUs (M)	8.2
Fully Diluted Shares (M)	96.7

Management and Board members own ~5% of common shares.

Why Invest in Canada Nickel?



CANADA NICKEL
COMPANY

Canada Nickel (CNC) owns 100% of the Crawford Nickel-Cobalt Sulphide project:

A new nickel discovery with large scale potential in an established mining camp adjacent to existing infrastructure north of Timmins, Ontario, Canada

- One of the top 10 nickel sulphide resources globally, with significant expansion potential
- Nickel mineralization in Crawford extended to Main, East, West and North Zones, with total strike length of ~7 km. Successfully intersected nickel mineralization at MacDiarmid option property 15% larger than original Crawford Main Zone
- Groundbreaking, mutually beneficial MOUs signed with local First Nations
- Canada Nickel has launched wholly-owned NetZero Metals Inc. to develop zero-carbon production of Nickel, Cobalt and Iron - has applied for trademarks NetZero Nickel™, NetZero Cobalt™, NetZero Iron™

Canada Nickel has completed PEA on May 25th, feasibility study by mid 2022

- PEA confirms robust economics - US\$1.2 billion after-tax NPV_{8%} and 16% after-tax IRR with first quartile net C1 cash cost of US\$1.09/lb and net AISC of US\$1.94/lb of nickel
- PEA on late 2020 resource – substantial upside resource potential and other initiatives to be included in FS

Canada Nickel is well timed – nickel appears to be entering a supercycle which occur every 15-20 years

- Prices should remain at relatively high levels for an extended period to incent new supply to meet already strong demand growth further accelerated by substantial requirements from electric vehicles

Nickel has limited investible opportunities

- Prior supercycle in 2005-2007 largely emptied project pipeline outside Indonesia



CANADA NICKEL
COMPANY

Appendix



Crawford PEA Operating Cost Summary



CANADA NICKEL
COMPANY

Operating Costs (\$ / tonne milled)	Phase I (Years 1 - 3.5)		Phase II (Years 3.5 - 7)		Phase III (Years 8 - 18)		Life-Of-Mine (Years 1 - 25)	
	US\$	C\$	US\$	C\$	US\$	C\$	US\$	C\$
Labour	\$2.39	\$3.19	\$1.49	\$1.98	\$1.20	\$1.60	\$1.26	\$1.68
Consumables	\$2.49	\$3.31	\$2.35	\$3.14	\$2.30	\$3.07	\$2.25	\$3.00
Maintenance	\$1.70	\$2.27	\$1.47	\$1.96	\$1.69	\$2.25	\$1.54	\$2.05
Diesel	\$1.02	\$1.36	\$0.78	\$1.04	\$0.78	\$1.04	\$0.72	\$0.96
Power	\$2.45	\$3.26	\$2.40	\$3.20	\$2.35	\$3.13	\$2.25	\$3.00
Other	\$0.95	\$1.27	\$0.52	\$0.70	\$0.40	\$0.53	\$0.43	\$0.58
TOTAL	\$11.00	\$14.66	\$9.01	\$12.02	\$8.71	\$11.61	\$8.45	\$11.27

Crawford PEA Sensitivities



CANADA NICKEL
COMPANY

Sensitivity	Delta NPV8% (US\$ millions)		Delta IRR (%)		Delta Net C1 Cash Cost (US\$ / lb)	
	-	+	-	+	-	+
Nickel Price \pm \$1/lb (\$6.75/lb - \$8.75/lb)	(\$445)	\$435	(2.8%)	2.6%	n.a.	n.a.
Nickel Price \pm 10% (\$6.98/lb - \$8.53/lb)	(\$342)	\$341	(2.1%)	2.0%	n.a.	n.a.
Iron Price \pm 10% (\$261/tonne - \$319/tonne)	(\$101)	\$101	(0.6%)	0.5%	\$0.26	(\$0.26)
Oil Price \pm \$10/bbl (\$50/bbl - \$70/bbl)	\$20	(\$20)	0.1%	(0.1%)	(\$0.04)	\$0.03
Exchange Rate \pm \$0.05 (\$0.70 - \$0.80)	\$222	(\$226)	1.8%	(1.7%)	(\$0.29)	\$0.28
Nickel Recovery \pm 10%	(\$344)	\$339	(2.2%)	2.0%	\$0.12	(\$0.10)
Initial Capex \pm 10%	\$83	(\$84)	1.1%	(1.0%)	n.a.	n.a.
Expansion Capex \pm 10%	\$36	(\$36)	0.3%	(0.3%)	n.a.	n.a.
Operating Costs \pm 10%	\$101	(\$101)	0.6%	(0.6%)	(\$0.23)	\$0.23



Parameter	Unit	Model Assumptions
Nickel Price	US\$/lb (US\$/tonne)	\$7.75 (\$17,000)
Chromium Price	US\$/lb (US\$/tonne)	\$1.04 (\$2,300)
Iron Ore Price	US\$ / tonne	\$290
US\$/C\$ Exchange Rate	USD:CAD	0.75
Oil	US\$ / barrel	\$60

Crawford PEA Detailed Summary



CANADA NICKEL
COMPANY

Ownership: 100%	Unit	Phase I (Years 1 - 3.5)	Phase II (Years 3.5 - 7)	Phase III (8 - 18)	LOM (Years 1 - 25)
Mine Type	Type			Open Pit	
Capital Expenditures					
Initial & Expansion	US\$ millions	\$1,188	\$543	\$194	\$1,925
Sustaining & Closure	US\$ millions / year	\$238	\$254	\$512	\$1,091
Mining & Milling					
Mill Capacity	ktpd	42.5	85	120	100
Ore Mined	Mtpa	26	35	46	37
Ore Milled	Mtpa	15	30	44	37
Strip Ratio	Waste : Ore	1.34	1.90	2.20	2.08
Nickel Head Grade	%	0.32%	0.26%	0.25%	0.25%
Chromium Head Grade	%	0.62%	0.63%	0.58%	0.60%
Iron Head Grade	%	6.02%	6.46%	6.58%	6.51%
Recovery					
Nickel Recovery	%	0.50%	0.44%	0.39%	0.37%
Chromium Recovery	%	0.27%	0.27%	0.27%	0.27%
Iron Recovery	%	0.38%	0.32%	0.36%	0.36%
Production					
Recovered Nickel	ktpa	23	35	42	34
Recovered Chromium	ktpa	25	52	69	59
Recovered Iron	ktpa	335	630	1,023	860
Payable Nickel	ktpa	21	32	39	31
Payable Chromium	ktpa	11	22	29	25
Payable Iron	ktpa	237	447	726	611
NSR	US\$/tonne milled	\$31.09	\$23.93	\$21.49	\$20.86
Average Costs					
Mining	US\$/tonne milled	\$5.25	\$3.97	\$4.22	\$3.84
Milling	US\$/tonne milled	\$4.77	\$4.54	\$4.11	\$4.19
G&A	US\$/tonne milled	\$0.98	\$0.51	\$0.38	\$0.42
Total Onsite Costs	US\$/tonne milled	\$11.00	\$9.02	\$8.71	\$8.45
C1 Cash Cost	US\$/lb Ni	\$1.46	\$1.32	\$1.20	\$1.09
AISC	US\$/lb Ni	\$3.09	\$2.57	\$1.97	\$1.94
Payables	% / Recovered		91% Ni, 71% Fe and 43% Cr		



CANADA NICKEL
COMPANY

Corporate Office

130 King St West
Suite 1900
Toronto ON
M5X 1E3

TSX-V: CNC
+1 (647) 256-1954
info@canadanickel.com
Twitter: @CanadaNickel